

# Curtain Tracks and Rods



Selecting the right rod or curtain track system will greatly enhance your curtains. Curtain Tracks are available in a number of styles and configurations; most Tracks and Rods can be bent or curved to accommodate any window shape.

## Flat Gliding Track

A simplistic track designed purely for functional use, typically these tracks will be matched colour wise as close to the wall colour as possible as they are a non-feature point and will be covered by the curtain. These tracks are available either hand drawn or cord drawn.

## Track Rod

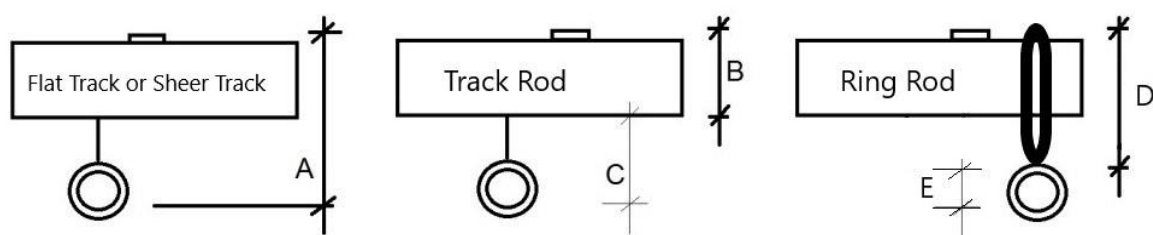
Track Rods with finials are a feature point and provide the look of a rod but also the full functionality of a standard track. The curtain is designed to sit just below the bottom of the rod. These Track Rods can be bent to fit most angles of a window frame and are also available hand drawn or cord drawn. The wave track/rod also belongs to this category.

## Sheer Track and Mini Track

These tracks are designed as a back track for sheers in double track system, or it can top fix onto inside of window frame or ceiling to hang sheer curtains.

## Ring Rod

The rods are able to take either light or medium weight curtains with the ring option and can be used without rings in conjunction with tab topped or eyelet curtains. Rings are available in either metal or nylon.



## Product Profile and Installation

Measurement A is for Flat Gliding Track or Sheer Track. It is to be measured from top of installation bracket to the bottom inner rim of the loop.

Measurement B/C is for Track Rod only. B is to be measured from top of installation bracket to bottom of rod (also referred as rod size). C is to be measured from bottom of rod to the bottom inner rim of the loop (also referred as rod heading).

Measurement D/E is for Ring Rod only. D is to be measured from top of installation brackets to bottom of ring (also referred as ring size). E is to be measured from bottom of ring to the bottom inner rim of the loop (also referred as rod heading).

Note: In New Zealand the top of installation bracket is normally flush with top of track/rod (or very close). Therefore, the measurement can be taken from top of track/rod rather than top of installation bracket.

To install a Flat Gliding Track, the height of the bracket equals to curtain full length. Take measurement from where curtain finishes (such as carpet) up by curtain full length. This is where the top of bracket should sit.

To install a curtain rod, the height of bracket equals to curtain full length plus rod size (measurement B), or plus ring size (measurement D). That is to say, the rod size (or ring size) needs to be added into the bracket height calculation to ensure curtain hangs underneath the rod (or ring). EG, 2400mm drop length curtain on 32mm track rod. Bracket is to be installed 2432mm from where curtain finishes. EG, 2300mm drop length curtain on 25mm ring rod. Note the ring size is actually 45mm so the rod size here has no use. Bracket is to be installed 2345mm from where curtain finishes. Meanwhile, finials take additional room both in width and height (its width is not included in the total rod width). These factors need to be considered when designing curtain project.

## Brands and Samples

Below brands are all made in New Zealand.

### Flat Gliding Track

Rufflette Superfit Track

Windoware M System (square or curved)

Martec Euro trac

These are the most common curtain tracks. A=40mm

Installation brackets can be top fix or face fix 30/  
50/ 70/90/110/ 130mm

Bent and cord drawn possible

10+ colours available



## Track Rod

Rufflette Senator Rod 26mm

Windoware Elegance Rod 25/28/35mm

Martec Keltic Rod 25/32mm

B=25-35mm (rod size); C=5-15mm

Installation brackets 50/ 70/ 90/110/130mm

10+ colours available



## Wave Track Rod

Standard track rod comes loose gliders. Wave track rod comes similar glider but each glider is connected by cord inside of rod. For more information refer to Wave curtain article.

Keltic Wave Rod 32mm

B=32mm; C=8mm; 6 colours

Ezi-Glide Wave Track Rod White only

B=14mm (Top fix) or B=17mm (Face fix)

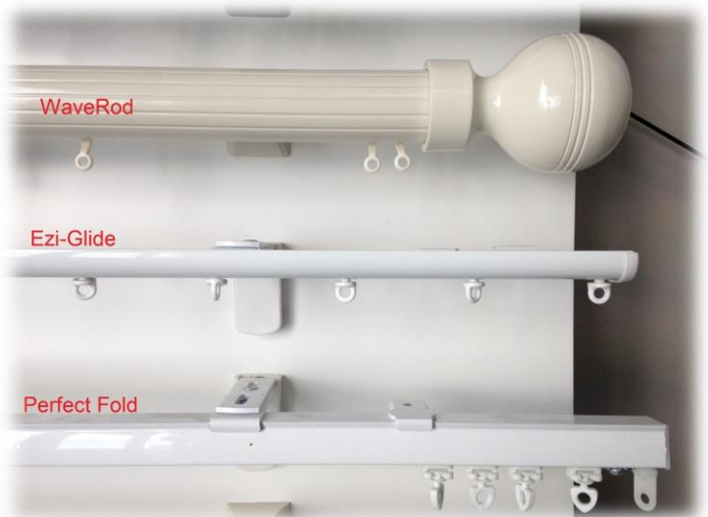
C=8mm

Perfect Fold Wave Track Rod White only

B=22mm (Top fix) or B=25mm (Face fix)

C=18mm

Only Perfect Fold Wave Track rod can be bent or corded.



## Timber Track Rod

Timberland Architrac or Round Rod 38mm

B=36mm; C=10mm; Brackets 40 or 60mm

Bend and cord drawn available. Can add sheer rail as back track. Brackets 100 or 120mm

3 polished colour available



## Sheer Track and Mini Track

Rufflette SheerMagic

Windoware Sheer Track

Martec Sheerail

Sheer tracks must be installed with brackets.  
They are normally the back track in double track system

Rufflette HiLine/ Trimline

Windoware MiniTrack/ MiniExcel

Mini tracks come no brackets.

Can top fix or face fix (flanged)

Only in White or Ivory



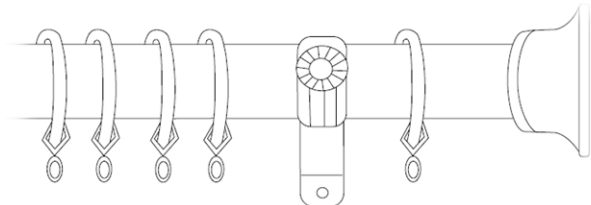
## Ring Rod

Windoware 25mm Ring Rod with 45mm ring

Black only

Martec 25mm Ring Rod with 35mm ring

4 colours available



Ring Rod comes maximum 3 brackets as rings or eyelets cannot pass through any brackets.  
Therefore Ring Rod normally does not go over 3.5m width and only hangs light or medium weight of curtains.

Nylon rings are recommended for silent pulling as this eliminates the noise of metal on metal.  
It also prevents wear on the powder-coated finish which may generate a fine powder that can sometimes stain light drapery.

## Finials

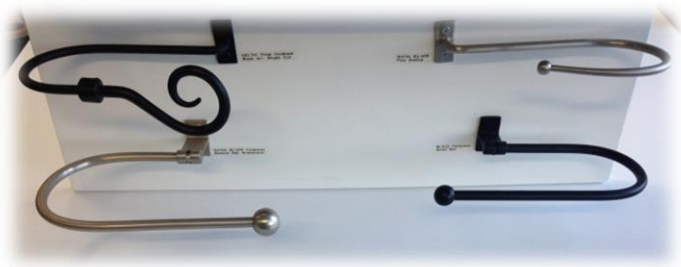
These are the decorators installed at each end of rods. Each finial comes different size both in width and height. These sizes are generally not included in the total rod width.



## Holdbacks

Fixed or Foldaway

4-6 colours depend on style



## Double Track System

The idea of using double track system is to use one track for light control curtain (solid material), and the other track for privacy curtain (sheers).

In general, front track option can be Flat Gliding Track, Track Rod, or Wave Track Rod. The back track option can be Flat Gliding Track or Sheer Track.



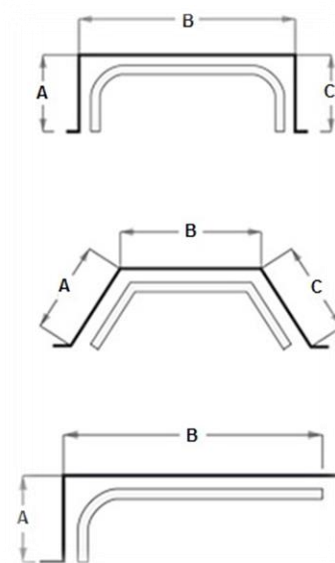
Track Rod and Wave Track Rod do not use as back track. Ring Rod does not go with double track system.

If solid curtain is at front and sheer curtain at back, back track can use Flat Gliding Track or Sheer Track. All curtains manual hand pull.

If sheer curtain is at front and lining curtain at back, Flat Gliding Track is recommended as back track. Benefit is that this track can be corded which means back track curtain can open or close via cord pulling so the front sheer curtains can remain closed at all time.

## Bent Track Measurement

Most curtain tracks/rods can be bent to any angle to suit different windows. The sketch on the right shows "wall to wall" measurement in 3 scenarios. Note: should the end of bent track happen to reach an obstacle, such as a heat pump or wall, a 5-10mm deduction on that side should be allowed to ensure ease of installation.



If a corner is not at 90 degrees (EG scenario 2), an "angle finder" is recommended to measure the bend.

All Flat Gliding Tracks and some Track Rods can be cut into smaller pieces for easy transportation. In this case a joiner will be provided for installer to join tracks on site. If it is a bent track, the cutting point must not be within 350mm from bent. That is also to say, the minimum width of an arm is to be 350mm.

## Wand or Cord Pulling

When track/rod is installed at 2.7m height or below, most curtains can be hand pulled easily. When the height goes up, hand pull becomes difficult-- curtains may not close in the middle tightly and it is too high to reach. A wand can be used to help in this situation. Wand comes with a clip at the top which can be hooked onto the last slider of each curtain. Pulling the wand may open or close the curtain properly, and may also reduce the chance of leaving hand mark on fabric.

Control Rod 0.75 Aluminium each 12516



Control Rod 1.00 Aluminium each 12517



Control Rod 1.25 Aluminium each 12518



If track/rod is installed at height 3.5m+ then wand is not long enough. In this case the track/rod is recommended to be corded. Be noted that once the track/rod is corded, the curtain is to be operated by cord only. Hand pulling may result in mess-up of sliders and cord inside the track and eventually jam the whole thing.

## Motorised Track

Up to 6m width. Top fix or face fix. White only. No bend. Remote control (no hard wire). Can use bridge connector (WiFi Hub) to switch control over smart phone.

Check supplier flyer for more details.